

SAMSUNG

YP-U1





## **MP3, WMA , Audio ASF and Ogg Playback**

- Your player supports playback of MP3, WMA, Secure WMA, Audio ASF and Ogg.
- \* OGG is a new audio compression format that is free, open and unpatented.  
For more info, see [www.vorbis.com](http://www.vorbis.com)
- \* ASF is a file format used in Windows Media player.  
This player can also play back ASF audio.

## **Removable Storage Device**

- You can easily copy and paste files to the player using Windows Explorer.

## **USB 2.0 Support**

- Maximum data speed transfer of 18 Mbps.



## Voice Recording Function

- You can make high quality voice recordings.

## Built-In Rechargeable Li-Polymer Battery

- The built-in rechargeable lithium battery provides up to 13 hours of play time.  
\*Time may vary depending on usage pattern.

## Upgradeable Firmware

- You can upgrade the player's firmware when available.  
Please check the home page ([www.samsung.com](http://www.samsung.com)) for upgrades.



# Contents

## Chapter 1 Preparations

Features .....	2
Safety Instructions.....	6
Components .....	8
Location of Controls .....	9
Display .....	10
Charging the Battery .....	11

## Chapter 2 Connection to Computer

Connecting the Player to Your PC ....	12
● Installing Software .....	12
● Connecting the player to your PC with the USB cable .....	14
Manual Installation of the USB Driver .....	16
● In Windows 98SE.....	18
Downloading/Uploading Files .....	20
Disconnecting the player.....	21
Formatting the Player on your PC .....	22
Installing Media Studio .....	23
Using Media Studio .....	25
● Downloading Files .....	25
● Formatting the Player in Media Studio .....	27
● Ripping Tracks from an Audio CD .....	28
● Creating a Folder on your Player .....	29
● Deleting Files .....	30

To View Help on Media Studio .....	31
------------------------------------	----

## Chapter 3 Using Your Player

Playing Music and turning Off the Device .....	32
● Turning Power On and Off .....	32
● Playing Music.....	32
● Pausing Music .....	32
● Adjusting the Volume .....	32
Hold Function .....	33
Recording Voice .....	33
Searching for Music/Voice Files .....	34
● To search for specific parts during play .....	34
● To change tracks during play .....	34
● To change tracks when stopped .....	34
Loop Repeating .....	35
● Starting Point .....	35
● Ending Point .....	35
MENU Options .....	36
Using Navigation .....	37
● Changing Modes .....	38
● Playing /Exiting Folder .....	39



Setting Playlist .....	40
● Setting Playlist.....	40
● Playing Playlist .....	40
Setting the Advanced Functions.....	41
Selecting the Play mode.....	42
Setting the EQ mode .....	43
● Preset EQ .....	43
● Bass Booster.....	43
● User EQ Set .....	43
Display Settings .....	44
● Scroll .....	44
● Display Time .....	44
● Backlight .....	45
● Contrast .....	45
● Tag .....	45
● Bitrate .....	45
Language Setting .....	46
● Menu .....	46
● ID3-Tag.....	46
System Settings .....	47
● Resume .....	47
● Default vol.....	47
● Search Speed .....	47
● Skip Interval .....	48
● Default set.....	48
● Beep.....	48
● About .....	48

Time Settings .....	49
● Auto Off Time .....	49
● Auto Sleep .....	49
● Intro Time .....	49
Managing Files .....	50
● Deleting a File .....	50
● Formatting the Player.....	50
To Upgrade Firmware .....	51

## Chapter 4 Appendix

MENU Table .....	53
------------------	----

## Chapter 5 Customer Support

Troubleshooting.....	54
Specifications .....	56
Safety Information.....	58
Warranty .....	60



# Safety Instructions

Read and understand all the instructions to avoid injury to yourself and damage to the equipment.

Do not expose to extreme temperatures (above 35°C or below -5°C). Do not expose to moisture.



Do not apply excessive pressure on the device.



Do not let any foreign matter spill into the device.



Do not place heavy objects on top of the device.



Be careful not to subject the player to excessive pressure when wearing it round your neck.



Do not expose to chemicals such as benzene and thinners.



Do not expose to direct sunlight or heat sources.



Do not store in dusty areas.



Do not try to disassemble and repair the device yourself.



\* Please be aware that we claim no responsibility for damage from data loss due to breakdown, repair or other causes.



## Earphones

### Follow Traffic Safety Instructions

- Do not use the earphones while driving an automobile or riding a bicycle.  
It's not only dangerous, but also against the law.
- It may cause an accident if you turn up the volume of the earphones while walking, especially when crossing intersections.

### Protect your ears

- Do not turn up the volume too high. Doctors warn against prolonged exposure to high volume.
- Stop using the device or turn the volume down if you have ringing in your ears.
- Take care so that the earphone cable is not caught by your arm or other objects while walking or exercise.

## Ambient operating conditions

- Ambient temperature : 5°C ~ 35°C (41°F ~ 95°F)  
Humidity : 10 ~ 75%

## Environmental Information

- Follow local guidelines for waste disposal when discarding packages, batteries, and old electronic appliances.
- Your player is packaged with cardboard, polyethylene etc., and does not use any unnecessary materials.



# Components



Player



Neck Strap  
(AH61-01414B)



Earphone  
(White: AH30-00070D)  
(Black: AH30-00069D)



Installation CD  
(AH80-00117A)

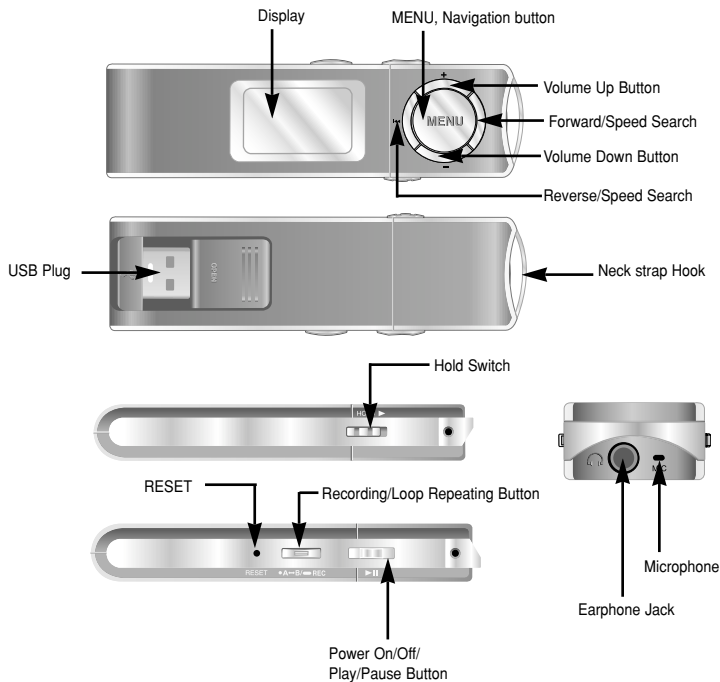
Model	YP-U1 H	YP-U1 V	YP-U1 X	YP-U1 Z	YP-U1 Q
Built-in memory	128MB	256MB	512MB	1GB	2GB

- The capacity of the useable built-in memory is less than indicated as the internal firmware uses a part of the memory as well.
- Design of accessories is subject to change for the purposes of improvement, without notice.



# Location of Controls

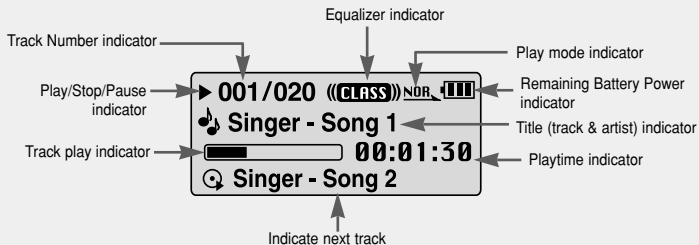
ENG





# Location of Controls

## Display



### Note

- The screen pictures are for illustration purposes only. The actual screen may differ.

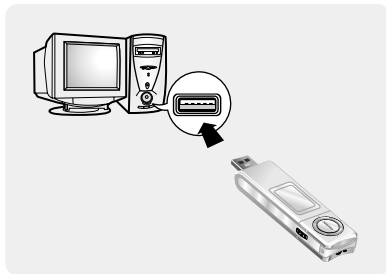


# Charging the battery

ENG

- 1 Slide the USB door on the rear side of the player in the direction of the arrow.
- 2 Turn the USB plug so that it faces outward.
- 3 Connect the USB plug on the player to the USB port on your computer.

- \* When recharging is complete, **"Fully Charged"** is shown in the display window.
- \* Battery recharge time in normal operation is approximately 2 hours and 30 minutes.



## Caution

- Fully charge the rechargeable battery if using for the first time or after several months of non-use.
- To avoid the risk of fire, do not charge longer than 12 hours.
- Overcharging will reduce the battery life.
- The rechargeable battery is a consumable item and its capacity will decrease gradually.
- If you connect the player through a USB hub, the connection may be unstable. Please connect the player to the computer directly.



# Connecting the Player to Your PC

## ❑ System Requirements.

The PC system must meet the following minimum specifications:

- Pentium 200MHz or greater
- Windows 98 SE/ME/2000/XP
- 40MB of available hard disk space
- CD-ROM drive  
(double speed or greater)
- USB port (2.0) supported
- VGA graphic

## 📌 Note

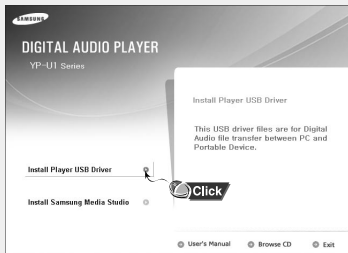
- Install the operating system in Administrator Account (main user) for Windows 2000 or XP. Otherwise, installation will not be completed.
- Windows ME, 2000 and XP can recognize the driver without installing the provided program. However, you must install the program in order to format the player and upgrade firmware.
- If you are using Windows 98, install the USB driver first before connecting the player to your PC.

Before connecting the player to PC, make sure to install USB driver.

If “Add New Hardware Wizard” appears, press the **[Cancel]** button and install the USB driver.

## ■ Installing software

- 1 Insert the Installation CD into the CD-ROM drive.  
Select **[Install Player USB Driver]**.





# Connecting the Player to Your PC

2 Follow the instructions in the window to complete the installation.



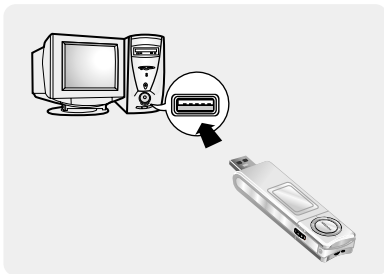
- When the software installation is complete, connect the player to the computer and use it as the following pages show.



# Connecting the Player to Your PC

## Connecting the player to your PC

- 1 Connect the USB plug of the player to the USB port on your PC.
  - If you disconnect the USB plug from your PC while implementing a command or initializing during USB driver installation, your PC may not function correctly.
- 2 The USB driver is installed with a message saying that it is searching for a new device. You may not see the display screen during installation. Go to the device manager (see next page) to check that installation has been successfully completed.
- 3 When the USB driver is successfully installed, "Samsung YP-U1 USB Device" will appear in your PC's control panel under **[System Properties]** → **[Device Manager]**.





# Connecting the Player to Your PC |

## How to check if USB driver is properly installed

Windows 98SE/ME:

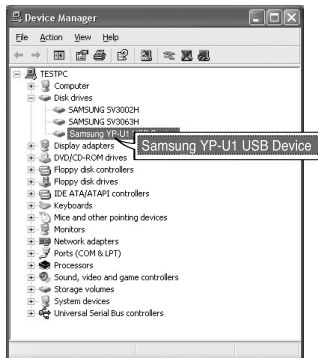
**Control Panel → System → Device Manager  
→ Disk Drives → Samsung YP-U1**

Windows 2000:

**Control Panel → System → Hardware →  
Device Manager → Disk Drives →  
Samsung YP-U1 USB Device**

Windows XP:

**Control Panel → System → Hardware →  
Device Manager → Universal Serial Bus  
controllers → Disk Drives → Samsung YP-U1  
USB Device**



**4** When the USB driver is not installed automatically, refer to the next page.



# Manual Installation of USB Driver

Go to “Downloading/Uploading files” on page 20 if the USB driver is installed automatically.  
If an error occurs during installation of the USB driver, you must install the USB driver manually.  
Follow these steps if the USB driver is not installed:

Be sure the Installation CD is inserted in your PC's CD-Rom drive.

## 1 Check the device manager.

Windows 98SE/ME:

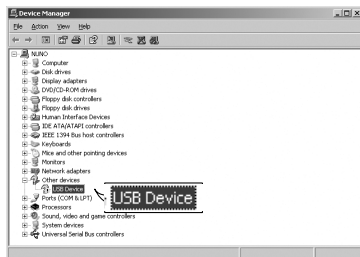
**Control Panel → System → Device Manager**

Windows 2000 / XP:

**Control Panel → System → Hardware →  
Device Manager**

## 2 Check if there is a device listed with an exclamation point or a question mark (displayed as unknown device or USB device).

## 3 Double click on the device listed with an exclamation point or a question mark.



### Note

- If you are using Windows 2000 and your version of Windows does not recognize the USB driver, please download and install the latest service pack from [windowsupdate.microsoft.com](http://windowsupdate.microsoft.com)
- The installation method may vary depending on the type of PC or operating system. Contact your PC dealer or service center for installation information.
- If errors occur continuously when you install the USB driver, reconnect the USB plug after rebooting your system.



# Manual Installation of USB Driver

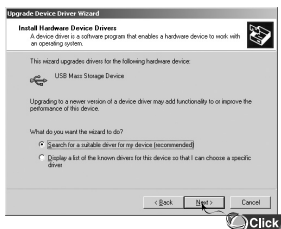
- 4 After selecting the driver, click **[Update Driver]**.



- 5 Click **[Next]**.



- 6 Select **[Search for a suitable driver for my device]** and then click **[Next]**.



- 7 Click **[Next]** to finish.

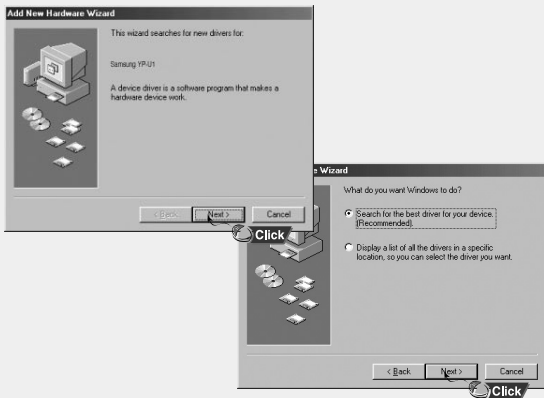




# Manual Installation of USB Driver

## In Windows 98SE

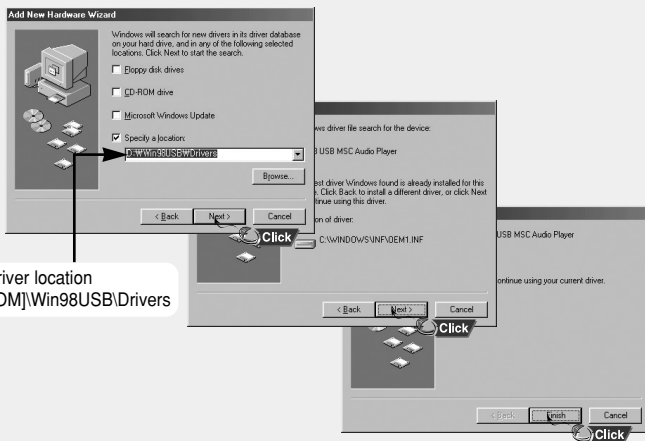
Follow the instructions in the window to complete the installation.





# Manual Installation of USB Driver

: You must reboot your computer to complete the installation.



USB driver location  
[CD-ROM]\Win98USB\Drivers



## Note

- You cannot use the player as a removable disc in Windows 98SE if the YP-U1 program is not installed.

Make sure to install the USB driver file first.



# Downloading/Uploading Files

When the MP3 player is connected to your PC, the PC will see it as a removable disc. Music and other files can then be dragged and dropped into the removable disc for playback on the MP3 player.

1 Connect the player to your PC.

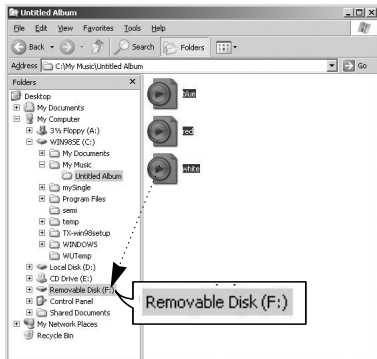
2 Open Windows Explorer on PC.

- Removable Disc is displayed in Windows Explorer.

3 Select the file to save and drag-and-drop it into the removable disk icon.

(Files appear on the player in numerical, alphabetical order)

- For example, if you change the name of music files in Windows Explorer to 001\*\*\*, 002\*\*\*..., the files will be played in the numerical order you set.



## Notice

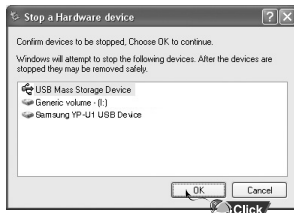
- The "USB Transferring" message will appear on the player's display during file download or upload. Disconnecting the USB plug while "USB Transferring" is displayed may cause malfunction of the player.
- The music file order displayed in Windows Explorer may differ from the play order on your device.
- To use the player as removable (backup) storage for your PC, simply drag and drop files to the Removable Disc icon in Windows Explorer in the same way as saving music files above.



# Disconnecting the player

After completing the file transfer, you must disconnect the player in the following way:

- 1 Double-click on the green arrow in the taskbar on the bottom right of the window.  
The **Safely Remove Hardware** message appears. Press **Stop**.
- 2 When the **[Stop a Hardware device]** message appears, press the **[OK]** button and disconnect the player.



## Notice

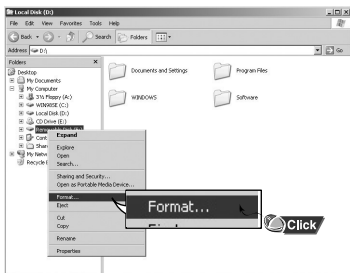
- If you disconnect the player improperly, the files on the device may be damaged and will not play.



# Formatting the Player on your PC

Formatting deletes all files on the MP3 player so maximum memory is available for new file storage. It saves you the trouble of deleting unwanted files one at a time.

**1** Select the removable disc icon in Windows Explorer and click the right mouse button to select **[Format]**.



**2** Press the **[Start]** button.

- All saved files will be deleted.
- You can change the name of removable disc by selecting **[Volume label]**.



## Note

- By formatting, all previously preset menus will be reset, and any pre-existing song or data files will be erased.
- Care must be taken as formatted files can not be recovered.

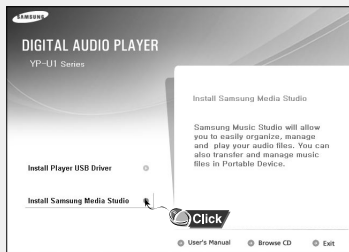


# Installing Media Studio |

Media Studio is the program that enables you to download music files to the player, and play back music files on your PC.

**1** Insert the Installation CD into CD-ROM drive.

Select **[Install Samsung Media Studio]**.



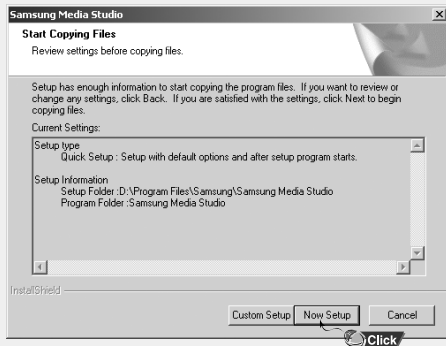
**2** Select language.





# Installing Media Studio

3 Follow the instruction in the window to complete the installation.





- Double-click the Media Studio icon on the Desktop.

## Downloading Music Files

### 1 Connect the player to your PC.

- A device connection window will appear on the right side of the screen.  
Select **[Device]** → **[Show device Window]** at the top of the screen if device connection window does not automatically appear.


### 2 Select the folder with the file(s) you want to transfer from the [Library] window.

- The music files within the folder appear in the center of the screen.

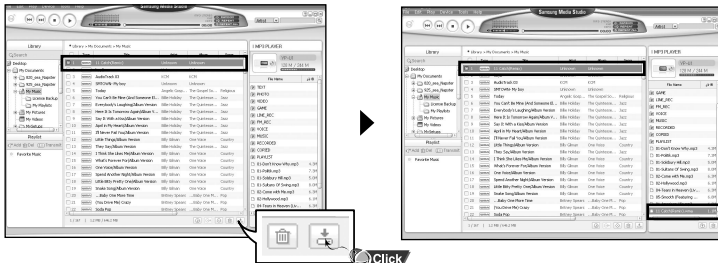




# Using Media Studio

3 When music files appear, select the file(s) you want to transfer, and then press the [Transfer]  button.

- The selected file(s) are transferred to the player.



**Note**

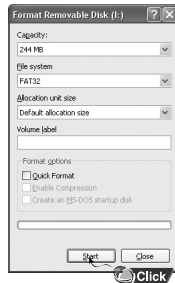
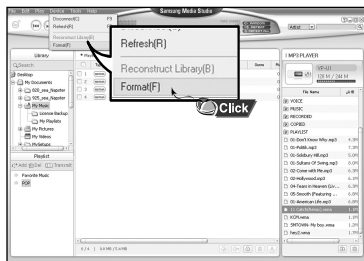
- Refer to the **[Help]** section of the software for more detailed information.



Formatting deletes all files on the MP3 player so maximum memory is available for new file storage. It saves you the trouble of deleting unwanted files one at a time.

## Formatting the Player in Media Studio

- 1 Connect the player to PC.
- 2 Press the **[Device]** → **[Format]** at the top of the screen.
- 3 Press the **[Start]** button when the Format screen appears.
  - The memory of the player is formatted (erased) and all the saved files will be deleted.




### Note

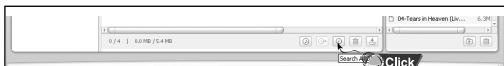
- Refer to the **[Help]** section of the software for more detailed information.




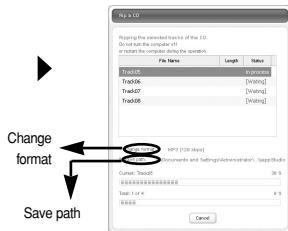
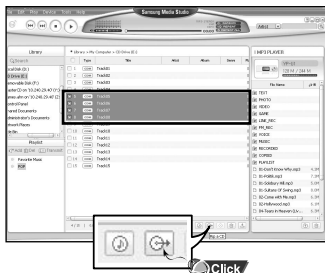
# Using Media Studio

## Ripping Tracks from an Audio CD

- 1 Insert the Audio CD into the CD-ROM drive of your PC.
- 2 Press the [Search Audio CD]  button on the lower part of the Media Studio software screen.
  - The tracks on the CD are displayed.



- 3 Select tracks to be ripped and press the [Rip a CD]  button.
  - The selected file is converted into an MP3 file.
  - Select [Tools]→[Audio Source Format Conversion Settings] on the top of the screen to change rip settings. You can change a file format, bitrate and save path on rip settings.




- Refer to the **[Help]** section of the software for more detailed information.



## Creating a Folder on your Player

You can create folders on the player to better organize your music.

- 1 Connect the player to your computer.
- 2 Press the **[Create Folder]**  button at the bottom of device connection window.
- 3 Enter the name of the new folder when an input screen appears.
  - A new folder is created on the player.
  - If you open a new folder and transfer a file, the file is transferred to the newly created folder on the player.




### Note

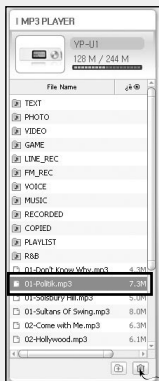
- Refer to the **[Help]** section of the software for more detailed information.



# Using Media Studio

## Deleting Files

- 1 Connect the player to your computer.
- 2 Press the **[Delete]**  button at the bottom of the connection window after selecting required files or folders you want to delete.
- 3 Press the **[Confirm]** button when the Confirm Deletion screen appears.
  - The selected folder or file is deleted.



### Note

- Refer to the **[Help]** section of the software for more detailed information.





# To View Help on Media Studio

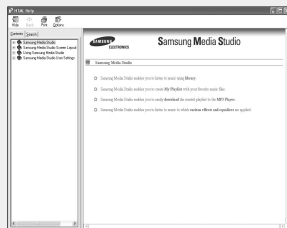
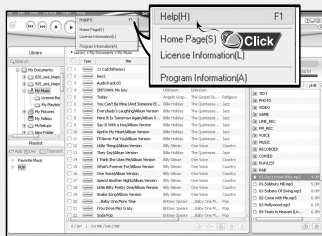
Press F1 on your PC's keyboard after starting Media Studio.

- Help will appear.

or

Click on [Help] at the top of Media Studio.

- Help window will appear.



## Note

- Music recognition technology and related data are provided by Gracenote and Gracenote CDDB® Music Recognition Service<sup>SM</sup>.
- CDDB is a registered trademark of Gracenote. The Gracenote logo and logotype, the Gracenote CDDB logo and logotype, and the "Powered by Gracenote CDDB" logo are trademarks of Gracenote. Music Recognition Service and MRS are service marks of Gracenote.



# Playing Music and Turning Off the Device

Make sure the player is fully charged and the earphones are connected.

## Turning Power On and Off

**Power On :** Press the ►|| button to turn on the power.

**Power Off :** Press and hold the ►|| button to turn off the power.

## Playing Music

Press the ►|| button.

- Playback starts.

## Pausing Music

Press the ►|| button to pause playback.

- If no buttons are pressed within 10 seconds (changes depending on settings shown on page 49), the player automatically powers off.
- While in Pause mode, press the ►|| button again to resume playback.

## Adjusting the Volume

Press —, + to adjust the volume from 00 to 30.




### Note

- If the file name is not displayed correctly, move to [Settings] → [Language] → [ID3-Tag] and then change the language setting.
- WMA files can only be played as music files with a compression rate of 48Kbps-192Kbps.
- The power off time can be set in the menu. See page 49.



# HOLD Function

In Hold mode, all buttons are disabled. This function is useful when you are walking or jogging.

Slide the  switch in the direction of the arrow.

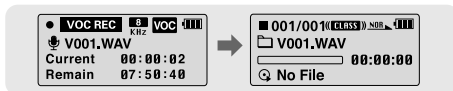
\* When the button is pressed, the “ HOLD!” message will appear on the display.

ENG

## Recording Voice

\* **To move to other modes from the Voice mode, refer to page 38 “Changing Modes”.**

- 1 Press and hold the **REC** button for two seconds and then release to start voice recording.
- 2 Press the **REC** button again to stop the recording and save the voice file.



### Note

- The files are recorded in the order of V001,V002....., and saved as WAV files in the VOICE folder after recording.([Menu] → [Navigation] → [Voice]).
- If the Memory is full, Voice Recording will be disabled automatically.



# Searching for Music/Voice Files

## To search for specific parts during play

- Press and hold **⏮, ⏭** during playback to search for the part you want to listen to.
- Release **⏮, ⏭** to resume play normally.

## To change tracks during play

- Press **⏭** briefly during playback to play the next track.
- Press **⏮** briefly within 5 seconds after playback starts, to move to and play the previous track. Press **⏮** briefly after five seconds to play the current track from the beginning.

## To change tracks when stopped

- Press **⏮, ⏭** in stop mode to move to the previous/next track.



### Note

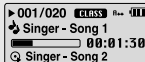
- VBR(Variable Bit Rate) file: A file that constantly changes the compression rate according to the type of sounds, such as their pitch, in the file.
- When playing a VBR file, you cannot move to and play the previous track even if you press **⏮** within 5 seconds after playback starts.
- Files that were downloaded in MP2 or MP1 and had their file extension changed to MP3 may not play.



## Starting Point

While playing music files, press the **A↔B** button briefly at the beginning of the loop you want to set.

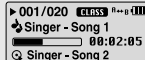
- **A↔B** appears in the display.



## Ending Point

Press the **A↔B** button briefly again to set the end of the loop.

- **A↔B** appears in the display.
- The loop is played repeatedly.



### Note

- Loop Repeat is automatically released if you Speed Search with **⏮**, **⏭**.



# MENU Options

**Press and hold the MENU button to switch to MENU mode.**

Use **←, →** to move and press the **MENU** button briefly to select the menu you want.

Press and hold the **MENU** button to exit the MENU mode.



- **Music** : To view the file currently playing.
- **Navigation** : To move to Navigation Mode and browse files and folders on the player.
- **Playlist** : To play back only the files you want
- **Settings** : To adjust the settings on the player. (refer to page 41)
- **Exit** : To exit MENU

## Note

- Menu mode will be cancelled if no buttons are pressed within 25 seconds
- Language in the menu screen can be changed in [Settings] → [Language] → [Menu].



You can easily search for files or switch modes using the Navigation function.

**1** Press the **MENU** button to enter Navigation mode,  
or press and hold the **MENU** button to move to Menu and then select  
Navigation in Menu.

**2** Select the file or folder that you want to play.

- **◀◀**: To exit a folder and go back one level.
- **▶▶**: To view the contents of a folder.
- **◀, ▶**: When moving to a file or folder in the same directory.
- **MENU**: Move to the next folder down. When there is not no lower folder,  
the selected file will be designated as part of the playlist.

**3** Press the **▶||** button.

- The selected file will be played.



## Note

- Press and hold the **MENU** button in Navigation mode to exit the Navigation mode.



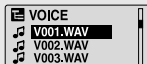
# Using Navigation

## Changing Modes

You can change the mode using the following method.

Ex) To change from the Voice mode to the Music mode

1 Press the **MENU** button in the Voice mode.



2 Use **⏮** to move to the upper folder.



3 Use **-**, **+** to move to the music file you want and press the **▶||** button.

- The selected file will be played and the mode is automatically changed to Music mode.





## Playing/Exiting Folder

### ▶ Playing Folder

1 Press the **MENU** button to move to the Navigation mode.

2 Use **←**, **→** to move to the folder you want and press the **▶** button.

- When " " appears, the files in the selected folder will be played.



### ▶ Exiting Folder Play

1 Press the **MENU** button during folder playback to move to the Navigation mode.

2 Use **←**, **→** to move to the file you want and press the **▶** button.

- After folder play is released, " " mark will appear and the selected file will be played.

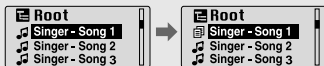




# Setting Playlist

## Setting Playlist

- Select a file while in Navigation mode and press the **MENU** button.
  - The selected file will be marked and added to the playlist.
  - To remove the file from the playlist, move to the marked file in Navigation mode and press the **MENU** button again.



## Playing Playlist

- 1 Select Playlist in the Menu.

- The playlist you set will be displayed.

- 2 Move to the file you want to play and press the **▶||** button.

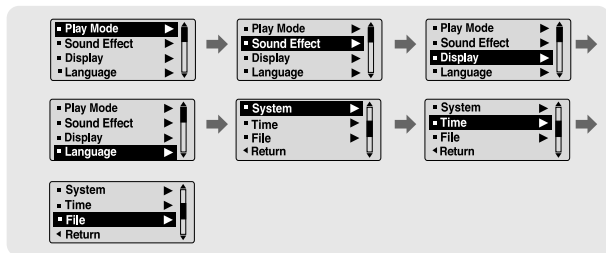
- “” mark appears and the selected file will be played.





# Setting the Advanced Functions

- 1 Select **Settings** in the Menu. (refer to "MENU Options")
- 2 In Settings, use **←, →** to move to the function you want and press the **MENU** button to select.
  - To move to a previous menu, use **⏮** or select Return.

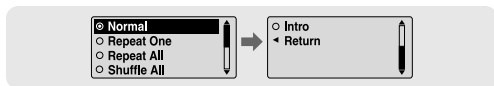




# Selecting the Play mode

**1** Press and hold the **MENU** button. Select Settings → Play Mode.

**2** In Play mode, use **←**, **→** to move to the mode you want and press the **MENU** button to select.



- Normal : To play all the files in order one time.
- Repeat One : To repeat one file.
- Repeat All : To repeat all files.
- Shuffle All : To play files at random.
- Intro : To play the first few seconds of a music file. (refer to page 49)
- Return : To move to a previous menu

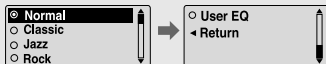


# Setting the EQ mode

Press and hold the MENU button. Select Settings → **Sound effect**.

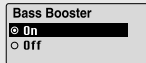
## Preset EQ

- Use **—**, **+** to move to the sound mode you want and then press the **MENU** button.
- **Normal** → **Classic** → **Jazz** → **Rock** → **User EQ**
- Select User EQ to set the 9 band EQ as desired.



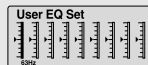
## Bass Booster

- Use **—**, **+** to select Bass Booster On or Off and then press the **MENU** button.
- Bass Booster function operates only when you select Normal, Classic, Jazz or Rock in the Preset EQ menu.
- **On**: When the music is played back, the bass is boosted.
- **Off**: Bass boost function is off.



## User EQ Set

- If User EQ is selected, the EQ can be set to your preference.
- Use **◀**, **▶** to move to the right or left to select the desired EQ, and use **—**, **+** to adjust the level. Press the **MENU** button after completing the setting.





# Display Settings

Press and hold the MENU button. Select Settings → **Display**.

## Scroll

### [ Type ]

- Use **—**, **+** to select one of the scroll types below.
- **Horizontal** : Music title moves horizontally.
- **Vertical** : Music title moves vertically.



⊙ Horizontal  
○ Vertical  
◀ Return

### [ Speed ]

- Use **—**, **+** to set the scroll speed from X1 to X5 to adjust the speed of the track title movement.



⊙ X1  
○ X2  
○ X3  
○ X4



○ X5  
◀ Return

## Display Time

- Use **—**, **+** to select the display time.
- **Play Time**: Current playback time is displayed.
- **Remain Time**: Remaining playback time of the current file is displayed.
- **Total Time**: Total playback time is displayed.



⊙ Play Time  
○ Remain Time  
○ Total Time  
◀ Return



## Backlight

- Use **—, +** to set the LCD Light-Off time from Off to 60 seconds.
- When set to On, the Light stays on continuously.

The LCD Backlight settings screen shows the text "LCD" at the top, followed by "Value:03sec". To the right of the text is a vertical scale with tick marks, indicating the range of possible values.

LCD  
Value:03sec

## Contrast

- Use **—, +** to set the contrast from 0 to 10 to adjust the brightness of the screen.

The Contrast settings screen shows the text "Contrast" at the top, followed by "Value:05". To the right of the text is a vertical scale with tick marks and asterisks at the top and bottom, indicating the range of possible values.

Contrast  
Value:05

## Tag

- Use **—, +** to select Tag On or Off.
- **On**: Displays the Tag information if contained on the music file. Displays the file name if the music file has no Tag information.
- **Off**: Displays the name of the music file.

The Tag settings screen shows the text "Tag" at the top. Below it are two radio button options: "On" (which is selected) and "Off".

Tag  
☒ On  
☐ Off

## Bitrate

- Use **—, +** to select Bitrate On or Off.
- When the Bitrate is on, it shows the bitrate of the file currently playing.
- **On**: Bit rate is displayed at the top of the screen.
- **Off**: The total number of tracks is displayed at the top of the screen.

The Bitrate settings screen shows the text "Bitrate" at the top. Below it are two radio button options: "On" (which is selected) and "Off".

Bitrate  
☒ On  
☐ Off



# Language Settings

Press and hold the MENU button. Select Settings → **Language**.

## Menu

- Use **—**, **+** to select the display menu language.
- **Chinese(S)** → **Chinese(T)** → **Dutch** → **English** → **French** → **German** → **Hungarian** → **Italian** → **Japanese** → **Korean** → **Polish** → **Portuguese** → **Russian** → **Spanish** → **Swedish**



## ID3-Tag

- Use **—**, **+** to select the Tag information display language.
- **Afrikaans** → **Basque** → **Catalan** → **Chinese(S)** → **Chinese(T)** → **Czech** → **Danish** → **Dutch** → **English** → **Estonian** → **Finnish** → **French** → **German** → **Greek** → **Hrvatski** → **Hungarian** → **Icelandic** → **Italian** → **Japanese** → **Korean** → **Norwegian** → **Polish** → **Portuguese** → **Romany** → **Russian** → **Slovak** → **Slovene** → **Spanish** → **Swedish** → **Turkish** → **Vietnamese** → **Return**



## Note

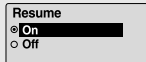
- What is an ID3 Tag ?  
This is what is attached to an MP3 to carry information relevant to the file, such as the title, artist, album, year, genre and a comment field.
- Supported languages can be changed or added.



Press and hold the MENU button. Select Settings → **System**.

## Resume

- Use **—**, **+** to select Resume On or Off.
- **On**: Playback will resume from the point it was previously stopped.
- **Off**: Playback will resume from the beginning of the file/track that was playing when stopped.



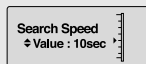
## Default vol

- Use **—**, **+** to set the default volume from 0 to 30(Max).
- If the power is turned on again after having adjusted the volume to a level above the default volume(for example: 20) music is played at the default volume level.
- If the power is turned on again after having adjusted the volume at or below the default volume (for example: 20 or lower), the music is replayed at the previous volume.



## Search Speed

- Use **—**, **+** to set the Search Speed to skip 1 second to 1 minute sections within a song.



- For a VBR or Ogg file, the search speed may not be exact.



# System Settings

Press and hold the MENU button. Select Settings → **System**.

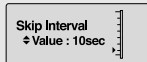
## Skip Interval

- Use **—**, **+** to set the skip interval from 5sec to 10min.
- Skip Interval determines the interval to be skipped when you press the **⏮**, **⏭** button in Music mode.
- If you set the Skip Interval to 1 Track, then press the **⏮**, **⏭** button, the previous or next track will be selected.



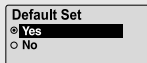
### Note

- For a VBR or Ogg file, the Skip Interval time may not be exact.



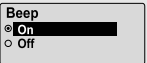
## Default Set

- Use **—**, **+** to select Default Set Yes or No.
- **Yes** : All settings selected will be returned to the original factory settings.
- **No** : All settings selected will remain as they are.



## Beep

- Use **—**, **+** to select Beep On or Off.
- **On** : The unit beeps when the buttons are pressed.
- **Off** : The unit does not beep.



## About

- If you select About, you can check the player's software version information, total number of tracks and remaining capacity.



### Note

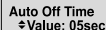
- Go to [samsung.com](http://samsung.com) for software updates.



Press and hold the MENU button. Select Settings → **Time**.

## Auto Off Time

- Use **—**, **+** to set the Power-Off time from 0 to 3 minutes.
- If no button is pressed after play stops, the player will automatically turn off after the time you set.
- When set to Off, the function is disabled.



Auto Off Time  
↕ Value: 05sec

## Auto Sleep

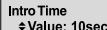
- Use **—**, **+** to set the Sleep time from 10 to 120 minutes.
- The player will automatically turn off after the time you set.
- When set to Off, the function is disabled.



Auto Sleep  
↕ Value: 10min

## Intro Time

- Use **—**, **+** to set the Intro time to 10, 20, 30, or 60 seconds.
- When you select the Intro function(Press and hold the MENU button. Select Settings → Play mode → Intro), the beginning of all files will be played back for the seconds you set.



Intro Time  
↕ Value: 10sec

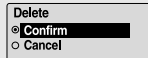
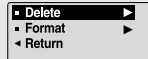


# Managing Files

Press and hold the MENU button. Select Settings → **File**.

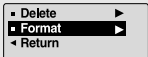
## Deleting a File

- 1 Press and hold the MENU button.  
Select Settings → File → Delete.
- 2 Use **←**, **→** to move to the file you want to delete and then press the **MENU** button.
- 3 Use **←**, **→** to move to Confirm and then press the **MENU** button.
  - The selected file will be deleted.



## Formatting the Player

- 1 Press and hold the MENU button.  
Select Settings → File → Format.
- 2 Use **←**, **→** to move to Confirm and then press the **MENU** button.
  - The player will be formatted and all files will be erased.



### Note

- All files will be deleted when formatting the built-in memory.



# To Upgrade Firmware |

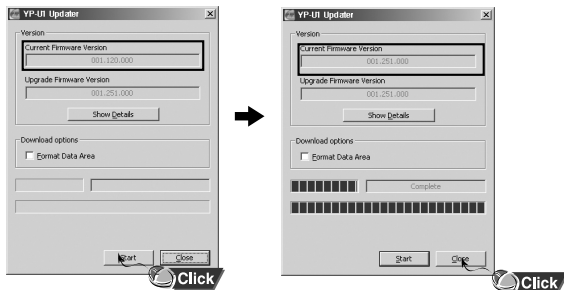
In order to upgrade firmware, you must first install the USB driver from the Installation CD if you have not done so already. The firmware upgrade utility is installed automatically with the USB driver.

- 1** Connect to <http://www.samsung.com>, select [SUPPORT] → [DOWNLOAD CENTER] and then select your product.
- 2** When the product page appears, select [Firmware] below the model name to download the latest firmware.
- 3** Uncompress the downloaded file in a folder.
- 4** Run Setup.exe and follow the instructions on the screen for installation.
  - If previous version of firmware updater has been installed on your PC, overwrite the firmware files (bootmanager.sb,resource.bin,StmpSys.sb,UsbMsc.sb) in "C:\Program Files\Samsung\YP-U1" folder.
- 5** Double-click YP-U1 Updater icon on the Desktop.

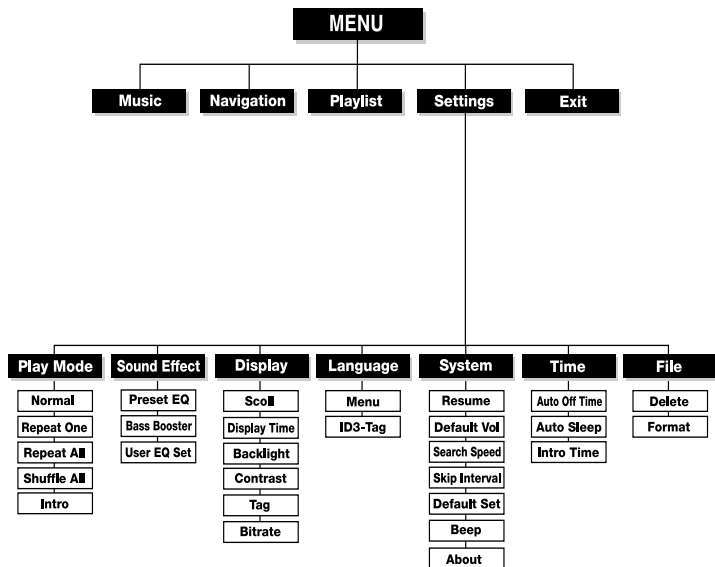


# To Upgrade Firmware

- 6 Connect the YP-U1 to your PC.
- 7 Check the current version and click the [Start] button of the Firmware Updater program to upgrade the Firmware.
  - If you select "Format data area" and start the update, all the data saved in YP-U1 will be deleted. Please backup your important data on your PC.  
If you do not want your data to be deleted, do not select "Format data area".
- 8 Confirm the version of the current firmware.
- 9 Click the [Close] button.







- Use the **MENU** button to access the menu.  
Use the **←, +, ⏮, ⏭** buttons to navigate.



# Troubleshooting

## **The software doesn't function properly**

- Refer to the System Requirements
- 

## **The player does not work and the LCD displays nothing.**

- Check the battery charge status of the player.
  - Connect the player to PC and run YP-U1 Updater in the desktop to update the player.
  - Reset the player by pressing the RESET Hole using a pointed object such as a safety clip.
- 

## **In PLAY mode, music is not played after pressing the ►|| button**

- Check to see if MP3 or WMA files are saved in the built-in memory.
  - Check to see if the HOLD button is locked.
- 

## **Files cannot be downloaded.**

- Check to see if the driver is installed correctly in the computer.
  - Check the connection between the player and PC.
  - Operating system limits the number of files you can save.  
Please save your music files by creating a subfolder.
  - Check if the memory is full.
- 

## **Backlight does not work.**

- Check the backlight setup.
  - When the battery power is low, the backlight will go out.
- 

## **The buttons do not work.**

- Reset the player by pressing the RESET Hole using a pointed object such as a safety clip.



## **The player keeps being turned off.**

- In Stop mode, the power is automatically turned off after ten seconds (changes depending on settings).
- Check to see if there are files saved in it.

---

## **Something's wrong with play time displayed during Play mode.**

- Check to see if a VBR file is playing.

---

## **LCD window is dark**

- Check the Contrast setting.

---

## **The file name is not displayed correctly.**

- Move to [Settings] → [Language] → [ID3-Tag] in the Menu and then change the language setting.

---

## **There is a file saved in the player, but “No File” appears in the screen.**

- After checking whether the folder is played, use the Navigation function to change the folder.
- After connecting it to PC, execute YP-U1 Updater in the desktop to update the product.

---

## **I cannot properly connect it to PC.**

- Win98SE : Try to connect again after installing the driver.
- WinME : Remove the driver program and then select the Start and then Windows Update on the Desktop. After selecting important update and service pack, execute update all.
- Win2000/XP : Try to connect it again after rebooting the computer.



# Specifications

<b>Model</b>	YP-U1
<b>Built-in Memory capacity</b>	128MB(YP-U1 H), 256MB(YP-U1 V), 512MB(YP-U1 X), 1GB(YP-U1 Z), 2GB(YP-U1 Q)
<b>Voltage</b>	3.7V (Li-polymer)
<b>Playing time</b>	lasts up to 13hours
<b>Dimensions/Weight</b>	1" X 3.44" X 0.53" / 1.16 oz
<b>Case</b>	Plastic
<b>Noise Ratio</b>	88dB with 20kHz LPF
<b>Earphones Jack Output Power</b>	18mW/CH (16Ω)
<b>Earphones Type</b>	Open air dynamic Type
<b>Output Frequency Range</b>	20Hz~20kHz
<b>Operating Temperature Range</b>	-5 ~ +35°C(23~95°F)
<b>File Support</b>	MPEG1/2/2.5 Layer3 (8Kbps ~ 320Kbps, 8KHz ~ 48KHz) WMA, Audio ASF (48Kbps ~ 192Kbps, 8KHz ~ 48KHz), Ogg(Q0~Q9)



The product unit accompanying this user manual is licensed under certain intellectual property rights of certain third parties. In particular, this product is licensed under the following US patents : 5,991,715, 5,740,317, 4,972,484, 5,214,678, 5,323,396, 5,539,829, 5,606,618, 5,530,655, 5,777,992, 6,289,308, 5,610,985, 5,481,643, 5,544,247, 5,960,037, 6,023,490, 5,878,080, and under US Published Patent Application No. 2001-44713-A1.

This license is limited to private non-commercial use by end-user consumers for licensed contents. No rights are granted for commercial use. The license does not cover any product unit other than this product unit and the license does not extend to any unlicensed product unit or process conforming to ISO/IEC 11172-3 or ISO/IEC 13818-3 used or sold in combination with this product unit. The license only covers the use of this product unit to encode and/or decode audio files conforming to the ISO/IEC 11172-3 or ISO/IEC 13818-3. No rights are granted under this license for product features or functions that do not conform to the ISO/IEC 11172-3 or ISO/IEC 13818-3.



# Safety Information

## FCC

This device complies with part 15 of the FCC Rules. Operation is subject to the following two conditions:

(1) This device may not cause harmful interference, and (2) this device must accept any interference received, including interference that may cause undesired operation.

**Caution:** Any changes or modifications in construction of this device which are not expressly approved by the party responsible for compliance could void the user's authority to operate the equipment

**Note:** This equipment has been tested and found to comply with the limits for a Class B digital device, pursuant to part 15 of the FCC Rules. These limits are designed to provide reasonable protection against harmful interference in a residential installation. This equipment generates, uses and can radiate radio frequency energy and, if not installed and used in accordance with the instructions, may cause harmful interference to radio communications. However, there is no guarantee that interference will not occur in a particular installation.

If this equipment does cause harmful interference to radio or television reception, which can be determined by turning the equipment off and on, the user is encouraged to try to correct the interference by one or more of the following measures:

- ◆ Reorient or relocate the receiving antenna.
- ◆ Increase the separation between the equipment and receiver.
- ◆ Connect the equipment to an outlet on a circuit different from that to which the receiver is connected.
- ◆ Consult the dealer or an experienced radio/TV technician for help.



## FCC

Any changes or modifications not expressly approved by the grantee of this device could void the user's authority to operate the device.

## Compliance

This product conforms to the following Council Directive:

- ◆ Directive 89/336/EEC, 92/31/EEC(EMC)

## Declaration of Conformity

Name: Samsung Electronics Co., Ltd  
Address: 416, Maetan-3Dong, Paldal-Gu,  
Suwon City, Kyungki-Do, Korea 442-742  
declares under its sole responsibility that the  
product  
Trade Name: Samsung Electronics Co., Ltd  
Model Number: YP-T8  
has been tested according to the  
FCC/CISPR22/95 requirements for Class B  
devices and found compliant with the following  
standards

EMI/EMC: AnSI C63.4 1992, FCC Part 15  
Subpart B

This device complies with part 15 of the FCC  
Rules.

Operation is subject to the following two  
conditions:

- 1.This device may not cause harmful  
interference, and
- 2.This device must accept any interference  
received, including interference that may  
cause undesirable operation.

Party Responsible for Product Compliance

Samsung Electronics America  
QA Lab.  
3351 Michelson Dr. Suite #290  
Irvine, CA92612



# Warranty

**Samsung warrants this product as free of defects in material, design and workmanship for a period of twelve(12) months from the original date of purchase.**

If during the period of warranty this product proves defective under normal use and service, you should return the product to the retailer from whom it was originally purchased. The liability of Samsung and its appointed maintenance company is limited to the cost of repair and/or replacement of the unit under warranty. Return of the product for defective reasons should be to the original purchaser; however, Samsung Authorized Dealers and Authorized Service Centers will comply with the warranty on the terms issued to purchasers in the country concerned. For further information relating to the Authorized Service Centers contact; 1-800-SAMSUNG (1-800-726-7864) [www.samsung.com](http://www.samsung.com)

## WARRANTY CONDITIONS:

- 1.The warranty is only valid when the warranty card is properly completed, and upon presentation of the proof of purchase consisting of original invoice or sales slip confirmation, indicating the date of purchase, dealer's name, model, serial No. and product number.  
Samsung reserves the right to refuse warranty service if this information has been removed or changed after the original purchase of the product from the dealer.
- 2.Samsung's obligations are to the repair of the defective part, and at its discretion, replacement of the product (service exchange unit).
- 3.Warranty repairs must be carried out by an Authorized Samsung Dealer/Service Center. No reimbursement will be made for repairs carried out by non Samsung Centers, and warranty coverage will not be valid for any repairs or damage caused by such repairs.
- 4.Repair or replacement under the terms of this warranty does not give right to extension to or a new starting of the period of warranty. Repair or direct replacement under the terms of this warranty may be fulfilled with functionally equivalent service exchange units.



5. The warranty is not applicable in cases other than defects in material, design and workmanship. The warranty does not cover the following:

- ◆ Periodic checks, maintenance, repair and replacement of parts due to normal wear and tear.
- ◆ Abuse or misuse, including but not solely limited to the failure to use this product for its normal purpose or in accordance with Samsung's instructions usage and maintenance.
- ◆ Use of the product in conjunction with accessories not approved by Samsung for use with this product.
- ◆ Failure of the product arising from incorrect installation or use not consistent with technical or safety standards in current force, or failure to comply with product manual instructions.
- ◆ Accidents, Acts of God or any cause beyond the control of Samsung caused by lightning, water, fire, public disturbances and improper ventilation.

◆ Unauthorized modifications carried out for the product to comply with local or national technical standards in countries for which the Samsung product was not originally designed.

◆ Repairs performed by non-authorized service centers such as opening of the product by a non-authorized person.

◆ The model, serial No. and product number on the product has been altered, deleted, removed or made illegible.

6. This warranty does not affect the consumer's statutory rights nor the consumers rights against the dealer from their purchase/sales agreement.



# Warranty

THERE ARE NO EXPRESS WARRANTIES OTHER THAN THOSE LISTED AND DESCRIBED ABOVE, AND NO WARRANTIES WHETHER EXPRESS OR IMPLIED, INCLUDING, BUT NOT LIMITED TO, ANY IMPLIED WARRANTIES OF MERCHANTABILITY OR FITNESS FOR A PARTICULAR PURPOSE, SHALL APPLY AFTER THE EXPRESS WARRANTY PERIODS STATED ABOVE, AND NO OTHER EXPRESS WARRANTY OR GUARANTY GIVEN BY ANY PERSON, FIRM OR CORPORATION WITH RESPECT TO THIS PRODUCT SHALL BE BINDING ON SAMSUNG. SAMSUNG SHALL NOT BE LIABLE FOR LOSS OF REVENUE OR PROFITS, FAILURE TO REALIZE SAVINGS OR OTHER BENEFITS, OR ANY OTHER SPECIAL, INCIDENTAL OR CONSEQUENTIAL DAMAGES CAUSED BY THE USE, MISUSE OR INABILITY TO USE THIS PRODUCT, REGARDLESS OF THE LEGAL THEORY ON WHICH THE CLAIM IS BASED, AND EVEN IF SAMSUNG HAS BEEN ADVISED OF THE POSSIBILITY OF SUCH DAMAGES. NOR SHALL RECOVERY OF ANY KIND AGAINST SAMSUNG BE GREATER IN AMOUNT THAN THE PURCHASE PRICE OF THE PRODUCT SOLD BY SAMSUNG AND CAUSING THE ALLEGED DAMAGE. WITHOUT LIMITING THE FOREGOING, PURCHASER

ASSUMES ALL RISK AND LIABILITY FOR LOSS, DAMAGE OR INJURY TO PURCHASER AND PURCHASER'S PROPERTY AND TO OTHERS AND THEIR PROPERTY ARISING OUT OF THE USE, MISUSE OR INABILITY TO USE THIS PRODUCT SOLD BY SAMSUNG NOT CAUSED DIRECTLY BY THE NEGLIGENCE OF SAMSUNG. THIS LIMITED WARRANTY SHALL NOT EXTEND TO ANYONE OTHER THAN THE ORIGINAL PURCHASER OF THIS PRODUCT, IS NON-TRANSFERABLE AND STATES YOUR EXCLUSIVE REMEDY.

Some states do not allow limitations on how long an implied warranty lasts, or the exclusion or limitation of incidental or consequential damages, so the above limitations or exclusions may not apply to you. This warranty gives you specific legal rights, and you may also have other rights which vary from state to state. This product is for personal use only, and is only for use in compliance with the limitations of copyright and other laws.



To obtain warranty service, please contact  
SAMSUNG at:  
Samsung Electronics America, Inc.  
400 Valley Road, Suite 201 Mount Arlington,  
NJ 07856  
1-800-SAMSUNG (1-800-726-7864)  
[www.samsung.com](http://www.samsung.com) 081299



The Samsung logo, consisting of the word "SAMSUNG" in a bold, sans-serif font, is centered within a white, horizontally-oriented oval. The oval is positioned in the upper left corner of the page.

**SAMSUNG**

Samsung Electronics America, Inc.  
400 Valley Road, Suite 201 Mount Arlington, NJ 07856  
1-800-SAMSUNG (1-800-726-7864)  
[www.samsung.com](http://www.samsung.com)

**YP-U1**